

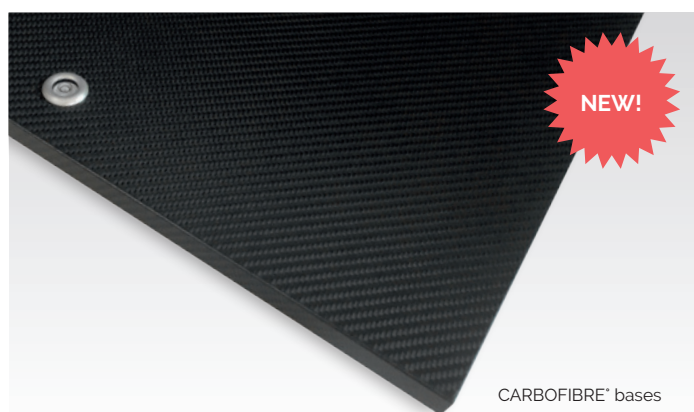


**finite elemente**

sound enhancing systems



PAGODE° rack systems




CARBOFIBRE° bases



CERABASE° B&W D2



CERABASE° B&W D3

PAGODE° rack systems   
CARBOFIBRE° bases   
CERABASE° B&W 

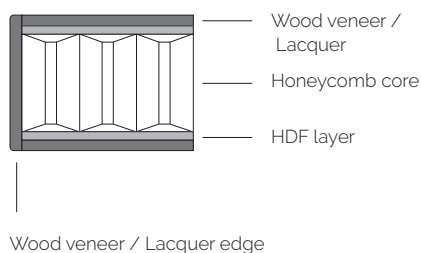
[www.finite-elemente.eu](http://www.finite-elemente.eu)



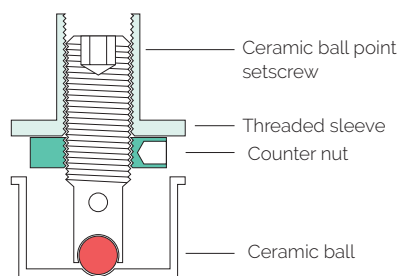
## PAGODE° MK II · new features

- Honeycomb core ultra-lightweight shelves for significantly optimized resonance absorption
- Ceramic ball coupling of honeycomb core shelves by means of ball point setscrews
- Tried-and-tested Resonator Technology in all racks and amplifier platforms
- CARBOFIBRE° isolation shelves with ceramic ball coupling optionally available for all PAGODE° EDITION MK II and MASTER REFERENCE MK II racks and amplifier platforms
- CARBOFIBRE° isolation shelves with ceramic ball coupling retrofitable to earlier PAGODE° MK I racks and amplifier platforms

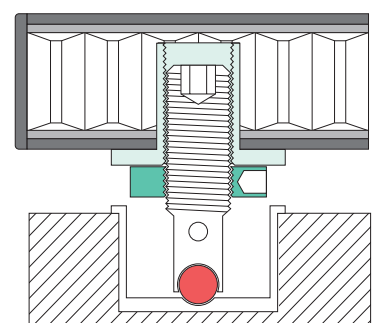
### Honeycomb core shelf

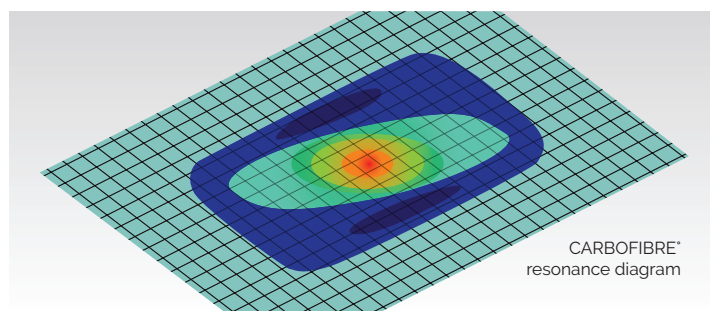


### Ceramic ball coupling



### Honeycomb core shelf with ceramic ball coupling

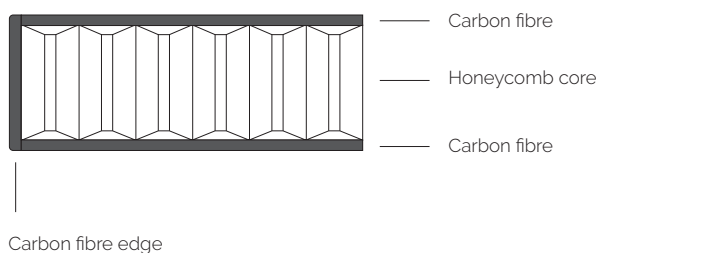




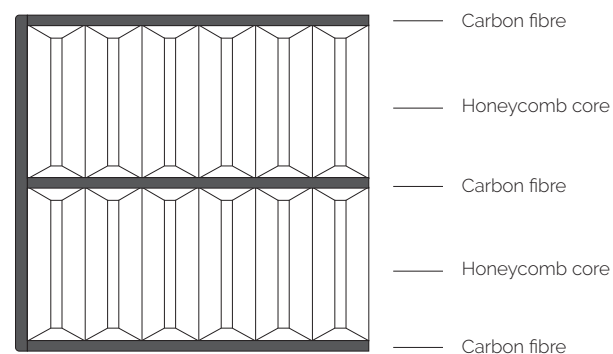
## CARBOFIBRE° features

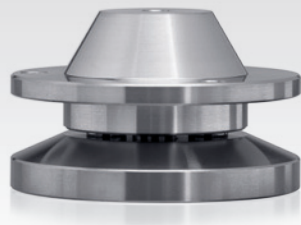
- Ultra-lightweight carbon fibre isolation bases with significantly optimized resonance absorption for improved sound quality
- Honeycomb core with carbon fibre layers all-round for an optimal combination of extreme torsional rigidity and resonance impairing lightweight design
- CARBOFIBRE° single-layer version for light to middle-weight components and CARBOFIBRE° HD multi-layer version for light to heavy components
- Precision bubble for easy levelling of isolation base
- Height-adjustable stainless steel feet with M8 threaded setscrews supplied as standard
- CERABASE°, CERAPUC° or CERABALL° available as an option

### CARBOFIBRE° single-layer isolation base



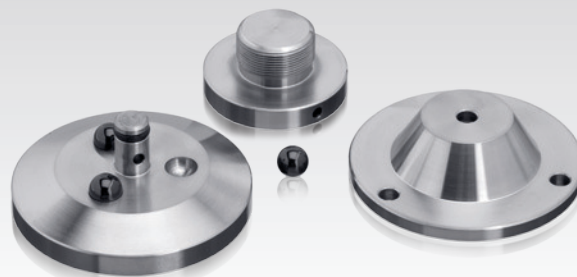
### CARBOFIBRE° HD multi-layer isolation base





NEW!

CERABASE° B&W D2



CERABASE° B&W D2 suitable for :  
B&W 800D, 801D, 802D, 800 Diamond, 802 Diamond



NEW!

CERABASE° B&W D3



CERABASE° B&W D3 suitable for :  
B&W 800D3, 802D3 & 803D3 Diamond



finite elemente

sound enhancing systems

MADE IN GERMANY

finite elemente Köpf Möhring GbR  
Am Heimekesberg 11 · 33106 Paderborn · Germany  
info@finite-elemente.eu · www.finite-elemente.eu

Technische Änderungen und Irrtümer vorbehalten.  
Technical modifications and errors excepted.

© finite elemente · May 2019